

**Global Trellis**  
rooting cross-cultural workers in love and competence

How to be an effective sending church

By *Amy Young, MA, LPC*

---

---

---

---

---

---

---

---

1

**Who I am**  
**Why I care**

On the field 18 years  
 – 10 of those member care director  
 Cofounder of Velvet Ashes  
 Written 6 books for cross-cultural workers  
 Founder Global Trellis

---

---

---

---

---

---

---

---

2

**Brief assessment of your people**

1. Who do you have: sent out, local in the area, local out of the area
2. May be tiered in terms of responsibility  
 –financial, emotional, crisis

---

---

---

---

---

---

---

---

3

**4 key areas**

- To think through
- To assess
- To engage with
- (One possibly to prepare for)

4

---

---

---

---

---

---

---

---

**#1 Relationship**

- Paul's letters
- Lower the bar ☺ . . . But have a bar!
- Respond
- Two-way
  - photo, your newsletter

**Action item:** I will . . . . .

5

---

---

---

---

---

---

---

---

**#2 Think through stage of life**

- Singles: 20s, 30s, 40-50s, 60+
- Newly married
- Young kids
- Infertility
- Education (cost, availability, higher)
- Health, vacations, retirement

**Action item:** I will . . . . .

6

---

---

---

---

---

---

---

---

### #3 Beyond prayer requests

- Get to know:
- visa process
  - current political situation
  - how relationship with other countries is impacting them +/-
  - about their housing +/-
  - about their team, current set up +/-

**Action item:** I will . . . .

---

---

---

---

---

---

---

---

7

### #4 Hard situations

- medical
- psychological
- if they don't respond

**Action item:** I will . . . .

---

---

---

---

---

---

---

---

8

### Resources

- All available
- on Amazon
  - in kindle




---

---

---

---

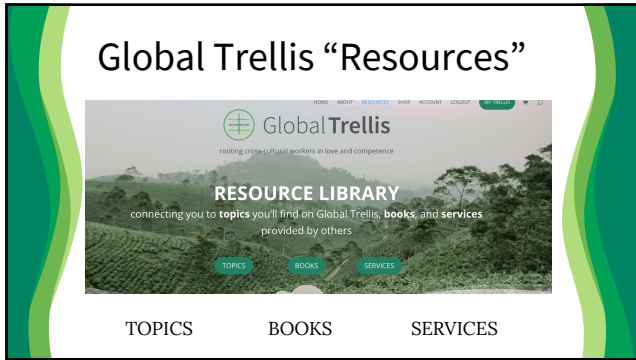
---

---

---

---

9



10

---

---

---

---

---

---

---

---



11

---

---

---

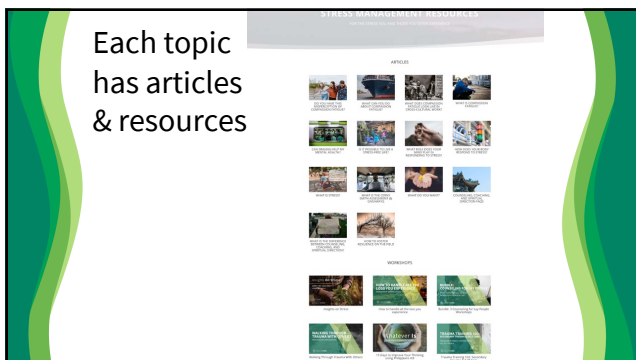
---

---

---

---

---



12

---

---

---

---

---

---

---

---