

THE GAP \leftrightarrow THE BRIDGE

HOW WIDE IS IT?

IS THERE A GAP?

WHAT NOW?





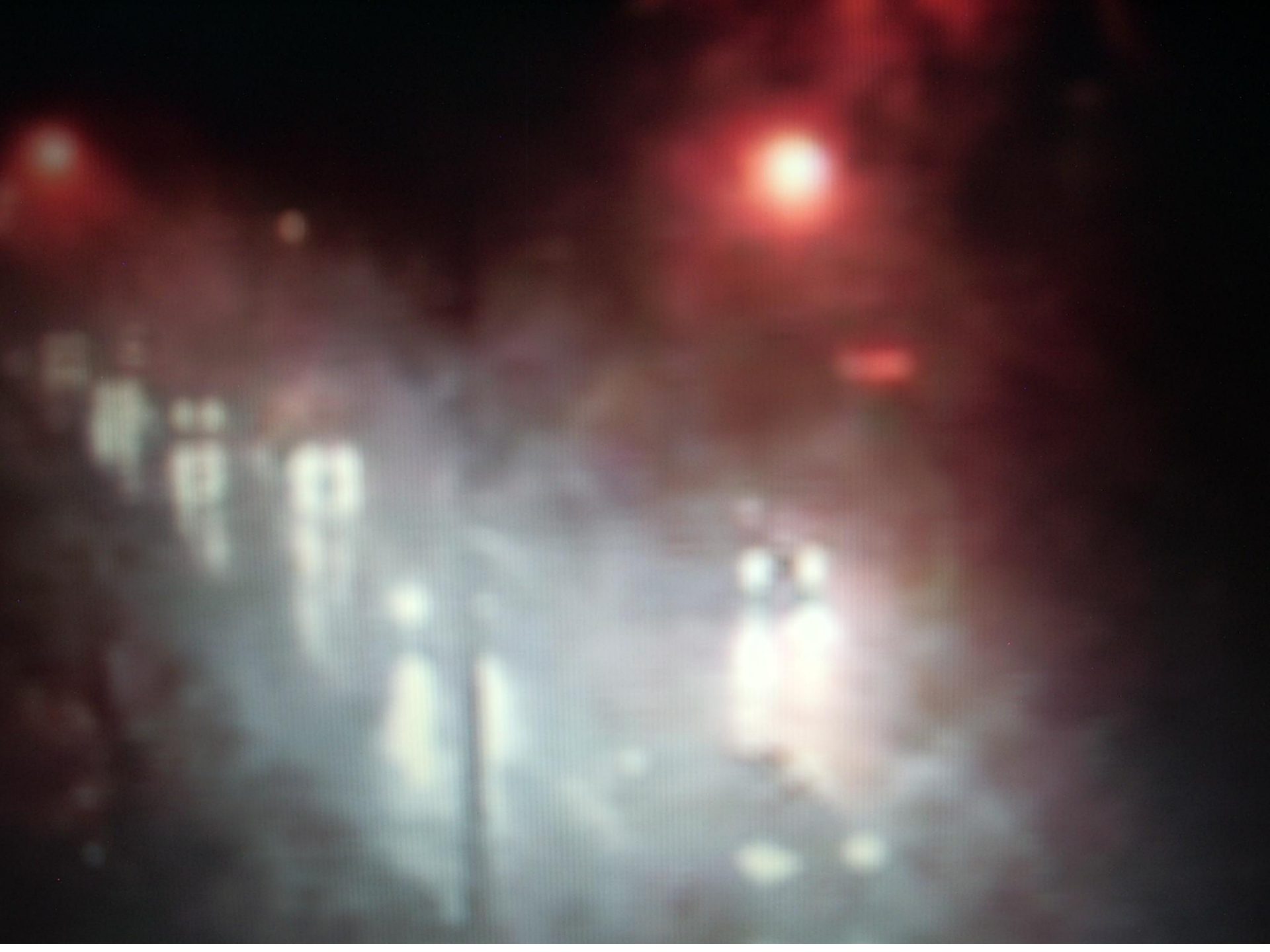


What do the following bridges tell us about planning Missionary Care?

American Legion Memorial Bridge

Bristol, Tennessee









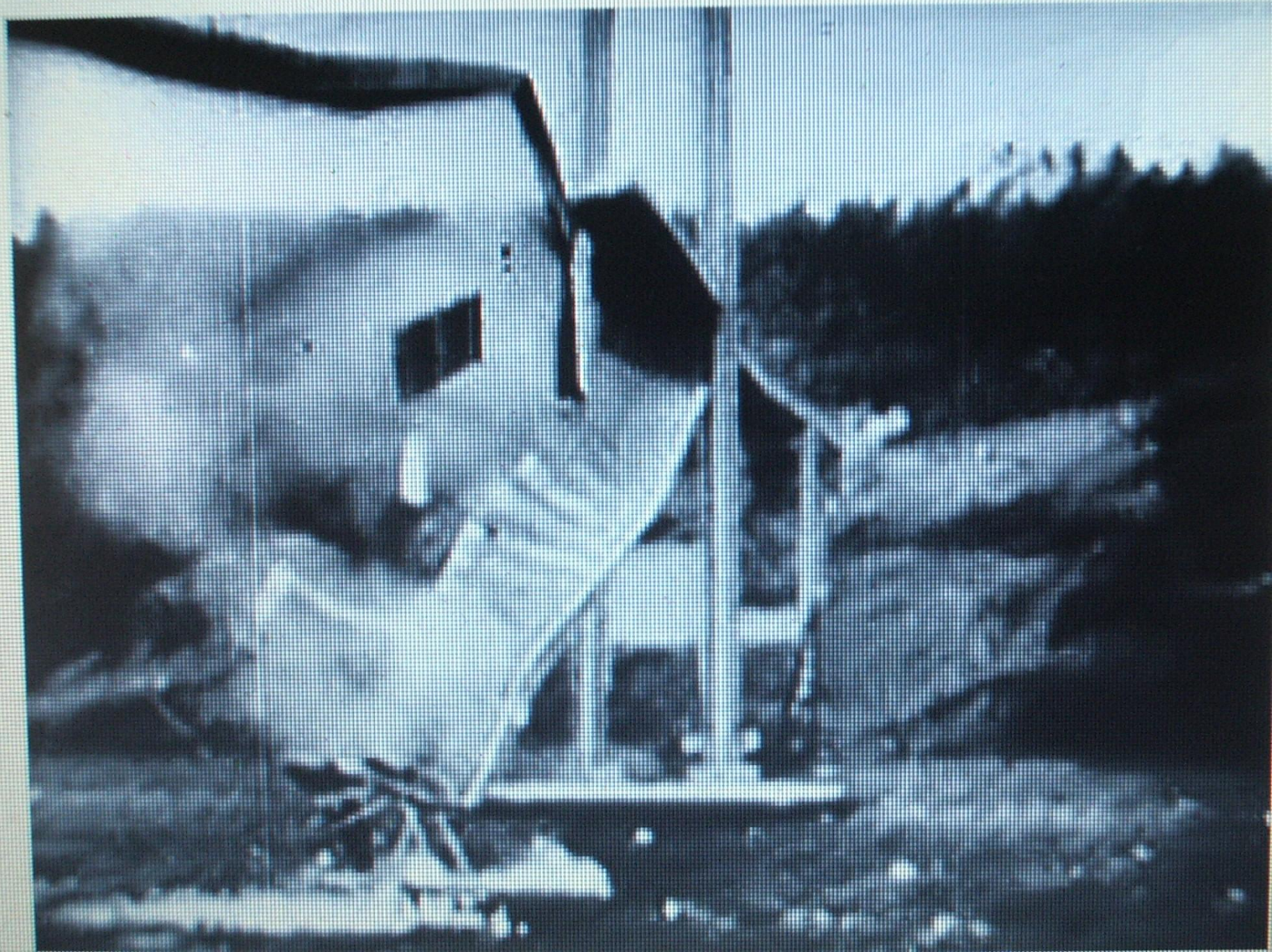




Golden gate



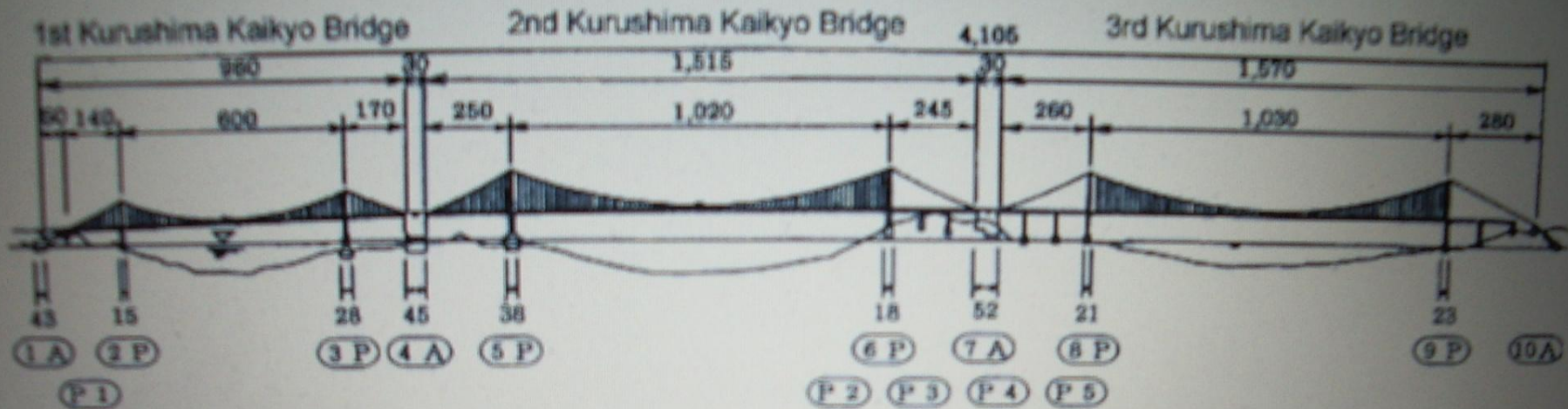




Simple but adequate



■ Kurushima Kaikyo Bridges



Other Bridges: z

@: EShin-Onomichi Bridge

@: EShin-Onomichi Bridge

@: Elkuchi Bridge

@: ETatsumi Bridge

@: EOnomichi Bridge

@: Enanata-Onomichi Bridge

@: EKurushima Kaikyo Bridge

BUILDING
BRIDGES OF CARE
MANY COMMON
DENOMINATORS
MANY DESIGNS
MANY MATERIAL
MANY USES

BRIDGES Questions to discuss

- MANY DESIGNS
- MANY MATERIALS
- MANY USES
- What are the variables when it comes to planning a caring bridge between **your church** and **your missionaries**?

Question to discuss

- 1. Mission vision of your church and its goals
- 2. Profession or calling of members
- 3. Immediate family issues and how are they handled
- 4. Extended family
- 5. Communicating to the missionaries the churches commitment to them in case of extraordinary circumstances.
- 6. The church's expectations of its missionaries in reporting and serving in the church when on home assignment

Biblical

Biblical
Missiological

Compassionate

Cultural

Comprehensive

A STRONG FOOTING

WHY IS IT FOGGY?

- A. Vision-no direction and no specificity
- B. Leadership-no champion
- C. Communication between church members,
Leadership, missionary, mission agency
- D. Misdirected enthusiasm-failure to take time
to know what to do.
- E. Other?



WHAT GOES WRONG?

Who might need
extra care?

A photograph of two women walking across a narrow log bridge over a stream. The woman on the left is wearing a white sleeveless top and a dark skirt. The woman on the right is wearing a light-colored short-sleeved shirt and a striped skirt. The stream has a small waterfall on the right side. The background is filled with dense green foliage and trees.

FIRST TERM

IT LOOKS SCARY TO ME!



ALL STRUNG OUT

2nd-3rd-4th
TERM

An aerial photograph of a collapsed highway bridge. The bridge deck is partially collapsed, with a large section falling away. Several vehicles, including a white truck and a blue car, are on the remaining bridge deck. Orange traffic cones are placed along the edge of the bridge. Below the bridge, a group of emergency responders in red uniforms are gathered on the ground, and a white mouse cursor arrow points towards them. The background shows trees and a clear sky.

DISASTER

=NATURAL

=HUMAN INDUCED

=SELF INFLICTED

=OTHER?

WHAT!

WHAT!

WHAT!

NEXT ?



Sometimes peer care

Sometimes peer care

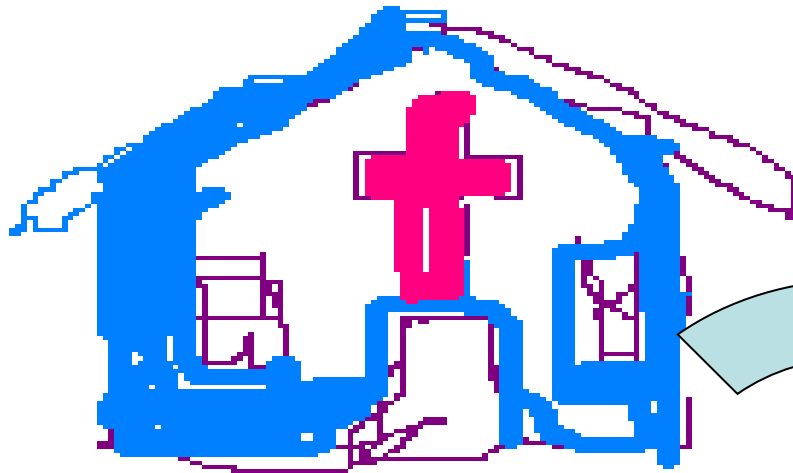


Sometimes it has to be professional

Sometimes in a backpack

SOMETIMES IT HAS
TO GO IN A BACKPACK

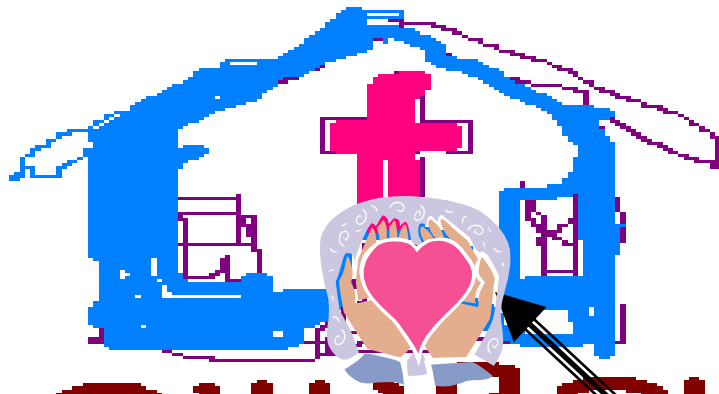




CHURCH

CARING BRIDGES





CHURCH

BUT ALWAYS THE CHURCH
IS THERE
MISSIO



